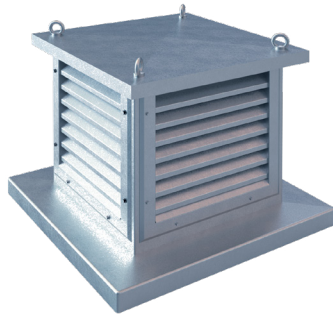




# REVIT MANUAL

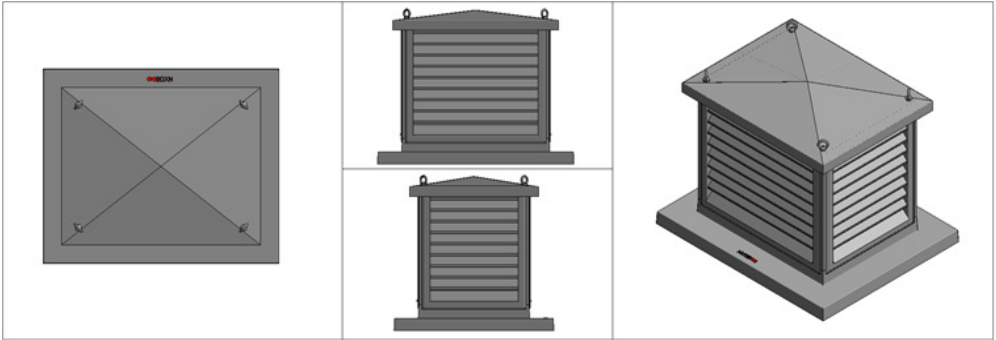
Penthouse louvre

**BDXN | BDYN**



**SUMMARISED REVIT BIM MANUAL SOLID AIR MODELS**

## SUMMARISED MANUAL REVIT BIM-MODELS SOLID AIR



| Text                    |                 |  |
|-------------------------|-----------------|--|
| SACS_Warning_Text_Flow  |                 |  |
| SACS_Warning_Text_Ploss |                 |  |
| SACS_Warning_Text_Size  |                 | Warnings when outcomes are outside the given threshold values. |
| SACS_Warning_Text_Sound |                 |  |
| SACS_Warning_Text_Other |                 |  |
| Materials and Finishes  |                 |  |
| SACS_Face_Color         | NLRS_57_...     | Material to apply color to.                                    |
| SACS_Material           | Sendzimir g...  |  |
| SACS_Material_Wire_mesh | 12 x 12 mm g... |  |
| Dimensions              |                 |  |
| SACS_Length             | 800.0           | Nominal length of the penthouse louvre.                        |
| SACS_Width              | 600.0           | Nominal width of the penthouse louvre.                         |
| SACS_Height             | 600.0           | Nominal height of the penthouse louvre.                        |
| NLRS_M_c01_breedte      | 600.0           |  |
| NLRS_M_c01_hoogte       | 600.0           |  |
| NLRS_C_hoogte           | 600.0           |  |
| Size                    | 600 x 800       |  |
| Mechanical              |                 |  |
| SACS_Max_Lp_dBA         | 45              | Maximum allowed sound pressure penthouse louvre*.              |
| SACS_Max_Ploss          | 50.000 Pa       | Maximum allowed pressure loss penthouse louvre*.               |
| System Classification   | Supply Air      |  |
| System Type             | Undefined       |  |
| System Name             |                 |  |
| System Abbreviation     |                 |  |

### Mechanical - Flow

|                                     |              |
|-------------------------------------|--------------|
| NLRS_M_c01_debiet                   | 8000.0000... |
| NLRS_M_c01_drukverlies_<br>statisch | 26.00 Pa     |
| SACS_Lp_dBA                         | 35           |

Air flow.  
Sound power level at airflow.  
Static pressure loss at airflow

### Identity Data

|                        |                    |
|------------------------|--------------------|
| NLRS_C_materiaal_kleur | no color treatment |
| NLRS_C_model           | BDXNGO 80...       |
| NLRS_C_description     | Solid Air Pe...    |
| SACS_Article_Code      | 8651000196         |
| SACS_Gross_Cost        | 1752.00            |
| SACS_Price_Date        | 14-01-2021         |

Used color.  
Article name selected model.  
Order number\*\*.  
Gross price\*\*.  
Validity date price.

### SACS\_Type\_Mark

### Model Properties

|                     |                                     |
|---------------------|-------------------------------------|
| SACS_Air_Velocity   | 4.60 m/s                            |
| SACS_Standard_Color | <input checked="" type="checkbox"/> |
| SACS_Custom_Color   |                                     |
| SACS_Color_Ral      | <input checked="" type="checkbox"/> |

The air velocity over the effective flow\*.  
Use default color (if checked).  
Entry field for costum color.  
If the color is different, the color is a RAL color.

### Visibility

|                       |                          |
|-----------------------|--------------------------|
| SACS_Warning_Disabled | <input type="checkbox"/> |
|-----------------------|--------------------------|

Hide warning on model.

### Notes

\*The assumed room attenuation for the sound power is 10 dB. For a penthouse louvre that does not have standard dimensions, the values for sound and pressure loss are an approximation. For the design, we always recommend using a standard size or to use the values of the next size down. When it is not possible to use a standard size, we always recommend contacting one of our advisers.

\*\*The order number is only given when it concerns a standard product with a standard color. In terms of the price, the color-change surcharge is not included in the gross price. The price of the color itself is included in the price.

### Design guidelines for fitting

The maximum recommended air velocity for supply air is 4 m/s, and maximum 5 m/s for the discharge.

The height of the penthouse louvre is determined by the length and the width of the louvre. For non-standard sizes, the height of the next size up is assumed.

The penthouse louvre is also available as a combined louvre for supply and discharge. This model is not suitable for that.

## Accessories

Upstand:

[https://solidair.nl/files/file/bim/modellen/Dakkappen/NLRS\\_57\\_DUA\\_UN\\_roof\\_kerb\\_for\\_penthouse\\_louvre\\_LT\\_sacs.rfa](https://solidair.nl/files/file/bim/modellen/Dakkappen/NLRS_57_DUA_UN_roof_kerb_for_penthouse_louvre_LT_sacs.rfa)

Grommet:

[https://solid-air.nl/files/file/bim/modellen/Dakkappen/NLRS\\_57\\_DUA\\_UN\\_connection\\_sleeve\\_for\\_penthouse\\_louvre\\_LT\\_sacs.rfa](https://solid-air.nl/files/file/bim/modellen/Dakkappen/NLRS_57_DUA_UN_connection_sleeve_for_penthouse_louvre_LT_sacs.rfa)



Solid Air International  
A. PO Box 14, 9610 AA Sappemeer  
T. +31 598 36 12 21  
E. [contact@solid-air.com](mailto:contact@solid-air.com)  
W. [www.solid-air.com](http://www.solid-air.com)